



2024 ASHE Update

May 8, 2024
SMSHE Symposium

© 2024 American Society for Health Care Engineering,
a professional membership group of the American Hospital Association
155 N. Wacker Drive, Suite 400 | Chicago, IL 60606
ashe.org | ashe@aha.org | 312-422-3800



Disclaimer

The views and opinions expressed in this presentation are purely those of the presenters and shall not be considered the official position of The American Hospital Association or the American Society for Health Care Engineering.

The guidance provided in this presentation shall not be considered professional design or engineering advice.

The information provided may not apply to a viewer's specific situation and is not a substitute for application of the viewer's own independent judgment or the advice of a competent professional.

ASHE does not make any guarantee or warranty as to the accuracy or completeness of any information provided. ASHE and the authors disclaim liability for personal injury, property damage, or other damages of any kind, whether special, indirect, consequential, or compensatory, that may result directly or indirectly from use of or reliance on information from this presentation.





Donald Page, MBA, CHFM

ASHE Region 5 Representative
Director of Engineering
Good Samaritan Hospital
Vincennes, IN



Skanda Skandaverl, MBA, CHFM, CHC, FASHE

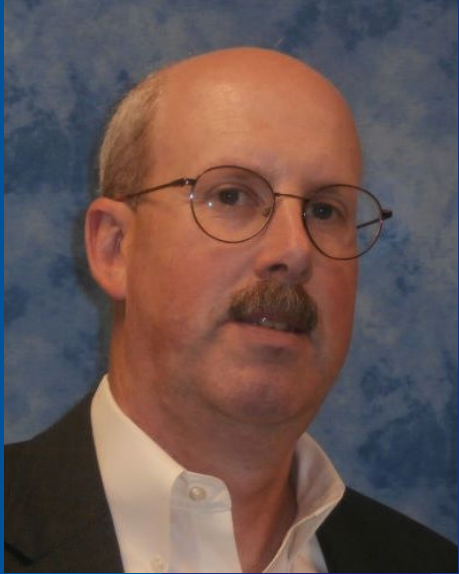
ASHE President

Division Director, Facilities Management,
Energy and Infrastructure, Midwest

CommonSpirit Health

Omaha, NE





Michael A. Hatton, MBA, CHFM, FASHE

ASHE President-Elect

Vice President Facilities Engineering/Construction

Memorial Hermann Health System

Houston, TX



ASHE Key Staff



Lizzie Ortolano
Executive Director,
ASHE and ASHRM



**Chad Beebe, AIA, CHFM, CFPS,
CBO, FASHE**
Deputy Executive Director, Regulatory Affairs



Tracy Dagnon, MBA, CAE
Senior Director,
ASHE Strategic Operations



Adam Bazer, MPD
Senior Director,
Knowledge Product Development



Tina Morton, MBA, CAE
Director,
ASHE Member Engagement



Jenny Hull
Lead Specialist,
ASHE Governance and Chapter Relations

SMSHE Leadership:

- President – Dan Martino
- President Elect/Secretary – James Krzywiecki
- Treasurer – Dino Marra
- Past President – Stanley Browning
- Past President – Jack Evans
- Directors – Jon Balsamo, Joe Francis, Elizabeth Lyon, David Rott, Frank Trupiano
- Advocacy – David Rott
- ASHE awards committee – Joe Francis

The American Society for Health Care Engineering (ASHE)





My ASHE Journey/My Career



ASHE Mission, Vision and Values

Mission:

Dedicated to optimizing the health care physical environment

Vision:

To engage stakeholders in the creation of health care environments that are optimal for healing.

Core Values:

Integrity, Innovation, Fellowship and Stewardship



2022 – 2024 Strategic Plan



Operational
Optimization



Member
Inclusion



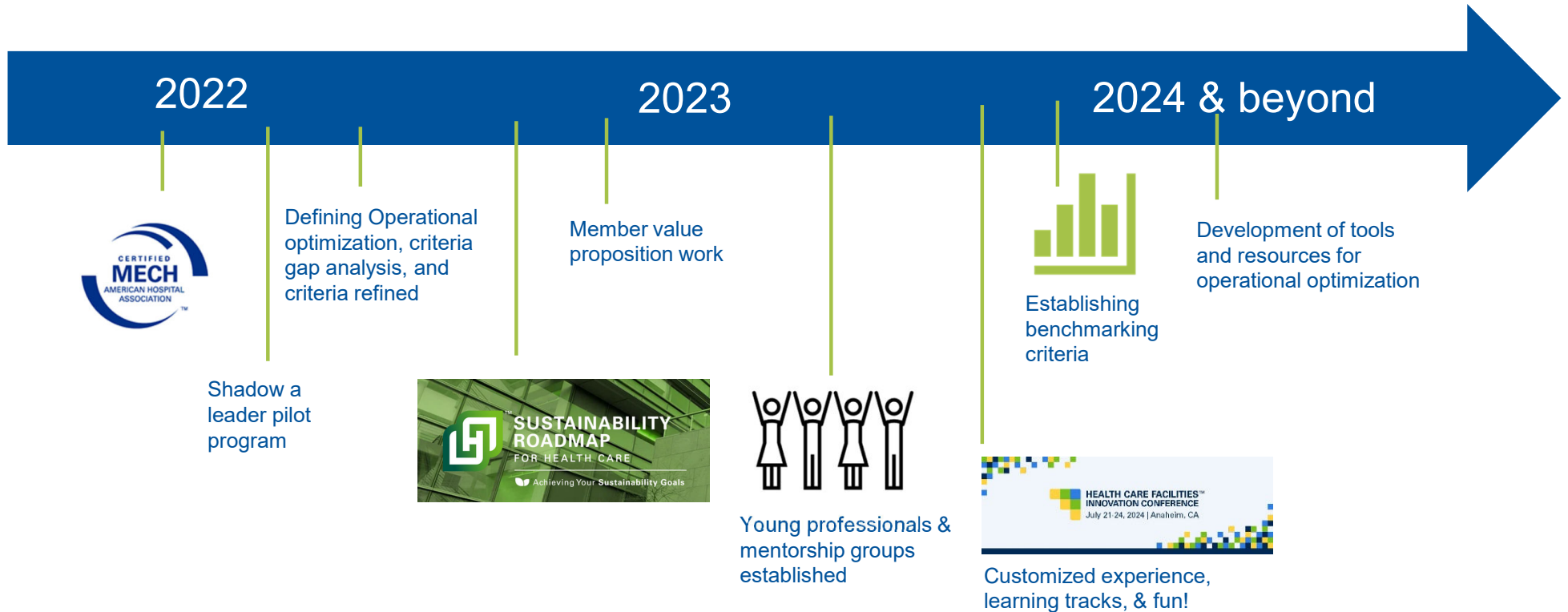
Career
Advancement



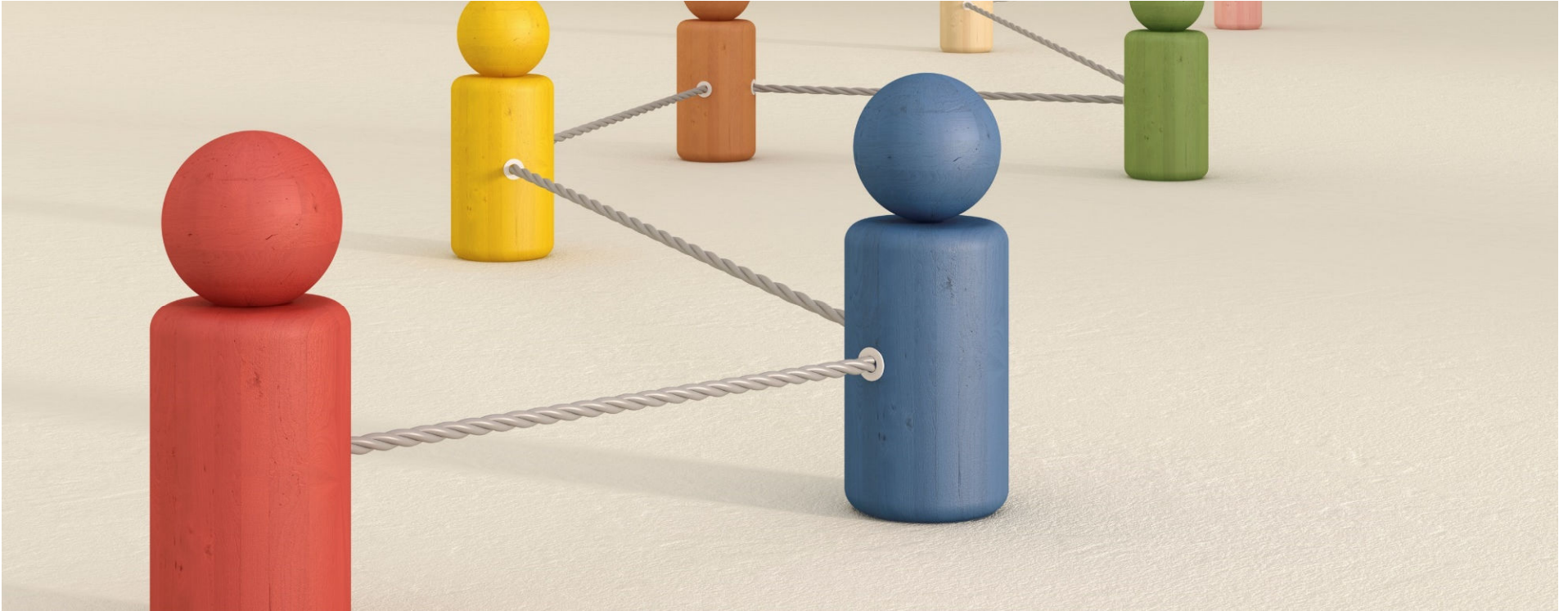
Capital
Planning



What have we done so far?



Progress Takes Partnership



Are you a national member?



Health Care Facility Management Professional

Receive the latest updates and education regarding health care facility codes and standards, and resources for advocating on behalf of your facility. Connect with 12,000+ professionals to share best practices and exchange innovative ideas.

Join as a Professional Active Member (PAM)



Architect or Design Professional

Stay informed on topics related to health care planning and design through exclusive and discounted resources, education and conferences, including the PDC Summit. Join our online network to connect, learn and innovate with others in the field.

Join as an Associate Member (ASC)



Contractor/Construction Professional

Access exclusive industry updates, trusted resources and discounted education, including certification exam review programs, specifically focused on practicing construction in a health care environment. Connect and network with 12,000+ industry professionals.

Join as an Associate Member (ASC)



Health Care Service, Manufacturing, or Consulting Professional

Foster business relationships within our community of 12,000+ industry professionals, and learn about how you can help solve the challenges they're faced with.

Gain recognition as a trusted provider among health care facility customers by aligning with ASHE.

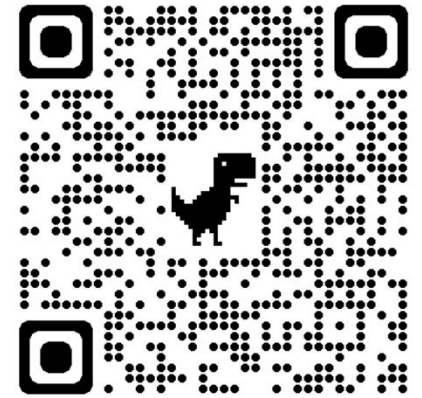
Join as an Associate Member (ASC)

Join Today at a discounted rate!

- ✓ Free OnDemand Quick Training
- ✓ Discounts on products & registration
- ✓ Advocacy Alerts
- ✓ Access to MyASHE – a national forum for questions & discussion
- ✓ Career support
- ✓ Automatic subscriptions (weekly newsletters & *HFM Media*)

ashe.org/join

or scan



NEW First-time Members Only

Join today to receive \$25 off your membership fee!

- Professional Active Membership use code: 312CHPAM
- Associate Membership use code: 312CHASC

Reducing Regulatory Burden

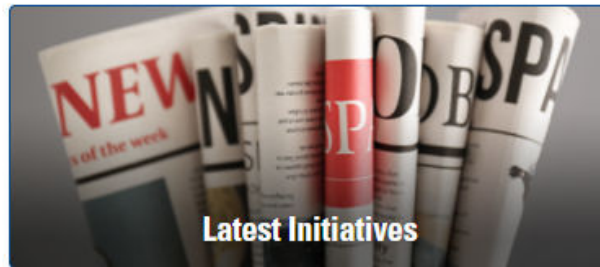
- Advocacy agenda and strategy
- Unified Code
- Preparing for the Future
- Sustainability
- Timely Information



Thank You, Advocacy Liaisons!

- Encourage you to get involved with your lawmakers ----
 - Sustainability targets are being created, that may not be achievable.
- Help to foster important advocacy efforts
 - Advocacy Liaisons are not intended to be a “box checked”, be the voice for your areas.

Compliance Help – Access it Now!



[**ashe.org/tools**](https://www.ashe.org/tools)





SUSTAINABILITY ROADMAP FOR HEALTH CARE

Achieving Your Sustainability Goals

Supporting Your ASHE Sustainability Journey

Health care facilities are dedicated to working together to become more sustainable by adopting environmental, social, and fiduciary practices that support healthy, equitable, and resilient environments and communities. In support of its mission of advancing the health of individuals and communities, ASHE provides strategic thought leadership, resources, and programs to support health care organizations pursuing sustainability.

Getting Started



The Basics

"Where do we start?" is a common question when embarking on a sustainability journey. Complicating the question further, the word "sustainability" is often used interchangeably with other related concepts. Standardize your team's communication to make your journey more cohesive and efficient with the [Sustainability Glossary](#).



Sustainability Guide

The ASHE [Sustainability Guide](#) was developed to provide step-by-step directions for developing and executing a sustainability program for your health care facility.



Success Stories and Sustainability Tips

Read [success stories](#) about the health care facilities that have improved sustainability and embarked on decarbonization. Gather real world examples and [sustainability tips](#) from health care industry professionals to help readers like you thrive in sustainable practices.



Discover Emissions Sources

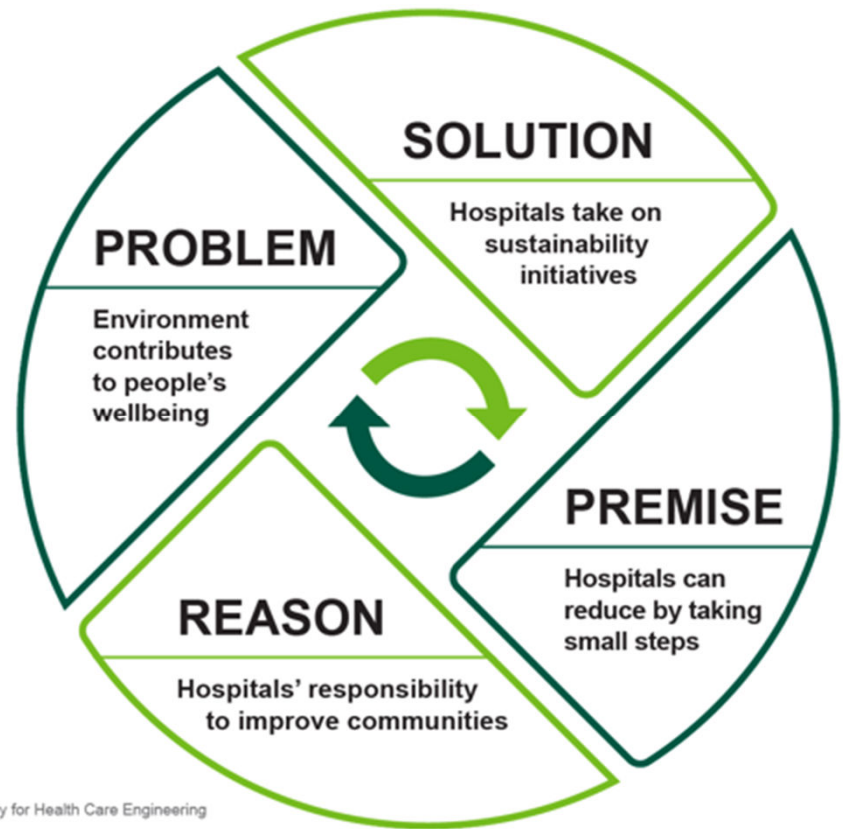
State and Local jurisdictions across the US are setting environmental sustainability and decarbonization goals and targets for commercial buildings. [Learn more](#) about hospital specific emissions and how they relate to different departments.



Taking Action

Learn to take action to decarbonize health care facilities and become more sustainable. These opportunities provide foundational knowledge of sustainability and empowers learners to work with their organizations to become more sustainable. Start your journey today!

- [HealQuest](#)™ Program
- [Operation Decarbonization: A Sustainability Game Plan for Health Care Facilities](#)
- [Sustainability Accelerator Tool \(SAT\)](#)
- [The Health Care Leader's Guide to Sustainability and Decarbonization](#)



Optimize

- Energy to Care Dashboard
- HealQuest Program

Educate

- Sustainability Tips
- Conservation Measures
- Success Stories
- Monographs

Recognize

- Energy to Care Awards
- Sustainability Champion Award
- Sustained Performance Award



ashe.org/sustainability

Move Your Career Forward In a Way That Works for You!

- Solve practical problems – Educational offerings
- Work toward certification
- Expand your knowledge in health care facility management, construction and code compliance



Explore
offerings



Training Made Easy

Keep your teams' critical industry knowledge up to date without the cost of travel and lodging

Let ASHE bring the education to you or your chapter!



Learn more



© 2024 American Society for Health Care Engineering

Inquire about ASHE's hosted and custom programs



Ways to Get Involved with ASHE

- Become a Proposal Reviewer or Course Beta Tester
- Apply to Be an ASHE Subject Matter Expert
- Volunteer at an Upcoming Education Event in your Area

Contact the Education team at ASHEeducation@aha.org



Additional Ways to Get Involved with ASHE

- **Participate in ASHEs salary survey**
- **Participate in ASHEs membership survey**
- **Post or respond to threads on the myASHE forum**
- **Submit a Voices of ASHE**



Contact ASHE@aha.org with questions!

Advance patient safety – get certified!



**Certified Health Care
Facility Manager**










**Mechanic Evaluation and
Certification for Healthcare**

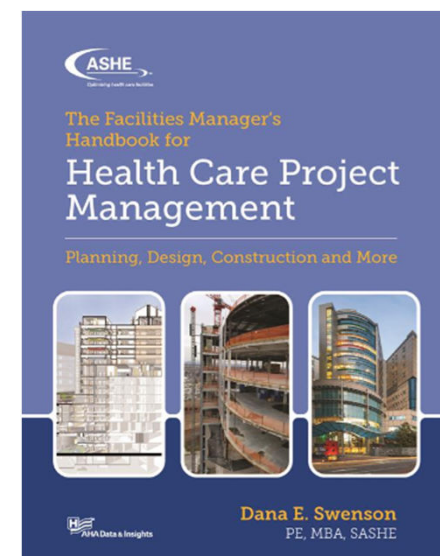
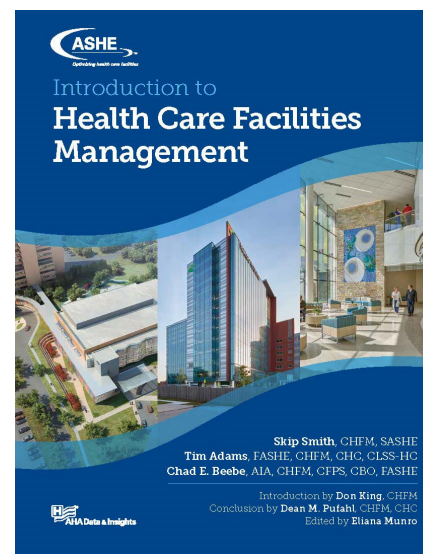


**Certified Health
Care Constructor**



Growing Your Skills: HCFM Handbook & Education Series

 Introduction to Health Care Facilities Management Now Available	 Health Care Project Management Now Available	 Compliance Coming Q2 2024
 Finance Coming Q3 2024	 Administration Coming Q4 2024	 Maintenance and Operations Coming Q1 2025
 Risk Coming Q3 2025	 Sustainability Coming Q3 2025	 Qualifications Coming Q4 2025



Health Facilities Management (HFM) Media



**Automatic
subscription when
you join!**

- Magazine publishes 6x/year in print and digital format.
- Comprehensive coverage of the unique challenges facing the field.
- Chance to earn continuing education credits.
- Additional content available online and via e-Newsletters.

ASHE In-Person Conferences & Exhibitions



July 21-24, 2024 | *Anaheim, CA*



March 9-12, 2025 | *Atlanta, GA*

Questions?

